

# 600S/660SJ *ALL TERRAIN*

## MID-SIZE TRACKED TELESCOPIC BOOM LIFTS



- Rugged tracked all-terrain telescopic boom lifts
- Powerful 4 wheel drive and oscillating axle
- Independent rubber tracks
- Simple to operate and easy to maintain
- Excellent working range and 6' jib for maximum versatility (660SJ)

 **snorkel**<sup>™</sup>  
[www.snorkellifts.com](http://www.snorkellifts.com)

# MID-SIZE TRACKED TELESCOPIC BOOM LIFTS

# 600S/660SJ

## ALL TERRAIN

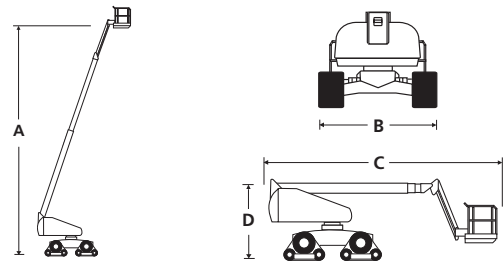
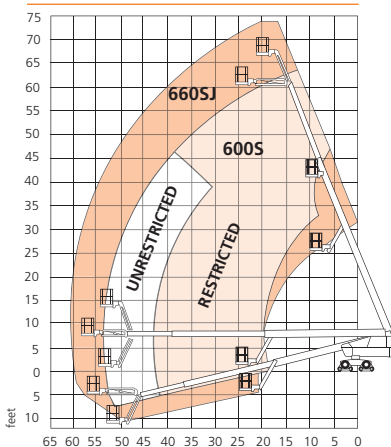
DIMENSIONS	600S*	660SJ*
Max. working height	66 ft 4 in	72 ft 11 in
Max. platform height (A)	60 ft 4 in	66 ft 11 in
Max. horizontal reach	52 ft 7 in	59 ft 1 in
Platform size	8 ft x 3 ft	8 ft x 3 ft
Transport width	7 ft 4 in	7 ft 4 in
Overall width (B)	8 ft 1 in	8 ft 1 in
Overall length (C)	30 ft 1 in	34 ft 2 in
Transport length	30 ft 1 in	28 ft
Stowed height (D)	8 ft 7.5 in	8 ft 7.5 in
Transport height	8 ft 7.5 in	10 ft 5.5 in
Ground clearance	17.5 in	17.5 in

PERFORMANCE	600S*	660SJ*
Platform capacity (SWL) unrestricted	600 lbs	600 lbs
Platform capacity (SWL) restricted	1,000 lbs	n/a
Max. drive height	60 ft 4 in	66 ft 11 in
Max. wind speed	28 mph	28 mph
Max. drive speed (stowed)	3.5 mph	3.5 mph
Max. drive speed (elevated)	0.6 mph	0.6 mph
Jib length	n/a	6 ft 6 in
Jib working arc	n/a	135°
Platform rotation	150°	150°
Superstructure rotation (continuous)	360°	360°
Raise/lower time	50/50 sec	50/50 sec
Tailswing	47 in	47 in
Gradeability	45%	45%
Inside turning radius	19 ft 6 in	19 ft 6 in
Outside turning radius	27 ft 6 in	27 ft 6 in
Tires	Independent rubber tracks	
Controls	Proportional drive, raise, slew, extend, jib and platform rotate	
Drive system	4 track drive	

POWER	600S*	660SJ*
Power source	Cummins 65hp (48.5kW) turbo diesel - Tier 4 Final	
Auxillary power unit	12V DC	12V DC

WEIGHT	600S*	660SJ*
Weight	26,110 lbs	28,770 lbs

### WORKING ENVELOPE



### STANDARD FEATURES

- 4 independent rubber tracks
- Snorkel Guard™ secondary guarding system
- 6ft 6in 135° jib (660SJ only)
- Hydraulic platform rotation
- Oscillating axle (8" of oscillation)
- Four track drive
- Swing-out engine tray
- All proportional controls
- Power line to platform
- Tilt alarm & cut out
- Motion alarm
- Hour meter & on-board diagnostics display
- Horn
- DC emergency operation
- Tri-entry platform
- Flashing amber light
- 2 year parts & labor, 5 year structural warranty
- ANSI compliant

### OPTIONS

- Special paint colors
- Airline to platform
- AC generator 110V/220V 2kW
- Aircraft package
- Deluxe aircraft package
- Cold weather package
- Extreme cold weather package
- Extreme environment package
- Glazier package
- Light package
- 10kW generator package
- 10kW generator/welder package
- Environmental hydraulic oil
- Tool tray



www.snorkellifts.com

P.O. Box 1160  
 St. Joseph, MO 64502-1160, USA  
 Tel: 1 (785) 989-3000  
 Toll-free: 1 (800) 255-0317  
 Fax: 1 (785) 989-3070  
 Email: sales.usa@snorkellifts.com